

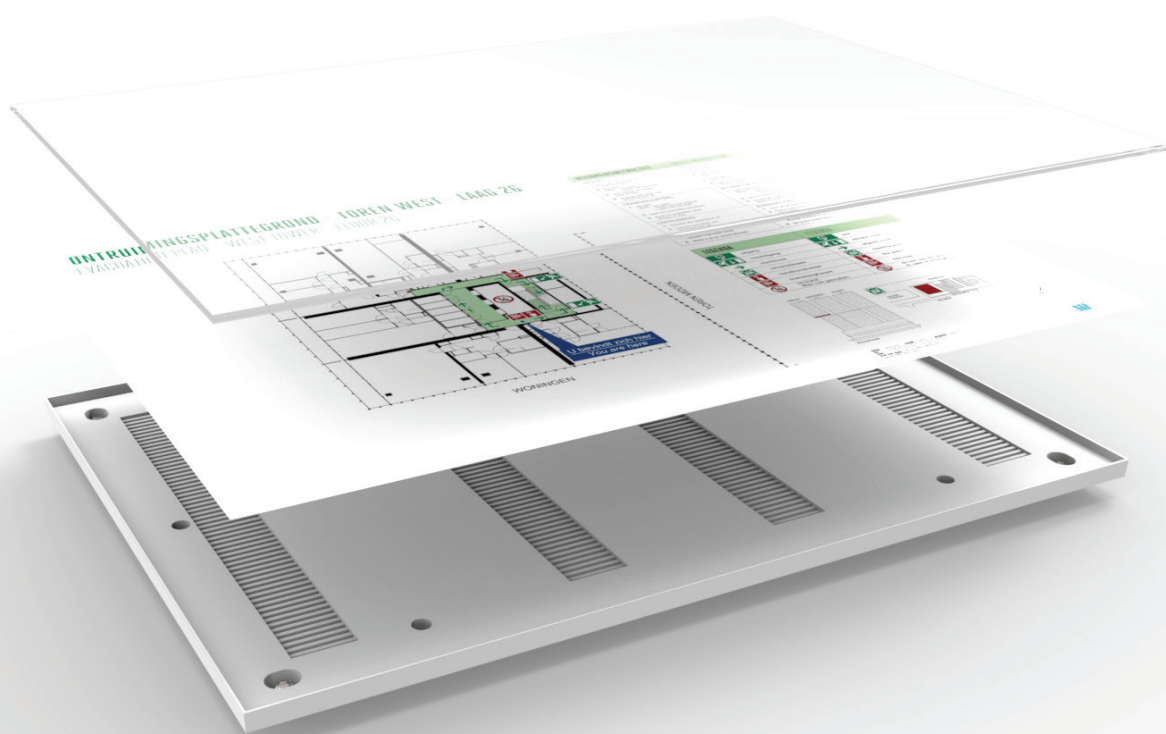
I-SIGN ECO



COSIGN

MODULAR SIGN SYSTEMS & WAY FINDING SOLUTIONS

I-SIGN ECO



www.cosign.be/isigneco

I-Sign Eco is the newest member of the I-Sign family. I-Sign Eco maintains the same sleek design with the thin edge which became so typical for the entire I-Sign range.

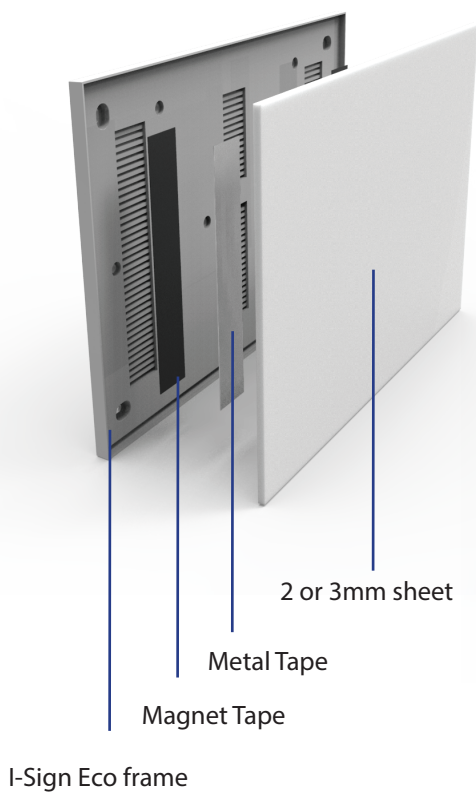
It is possible to create single-sided wall mounting or double-sided suspended or flag mounting signs.



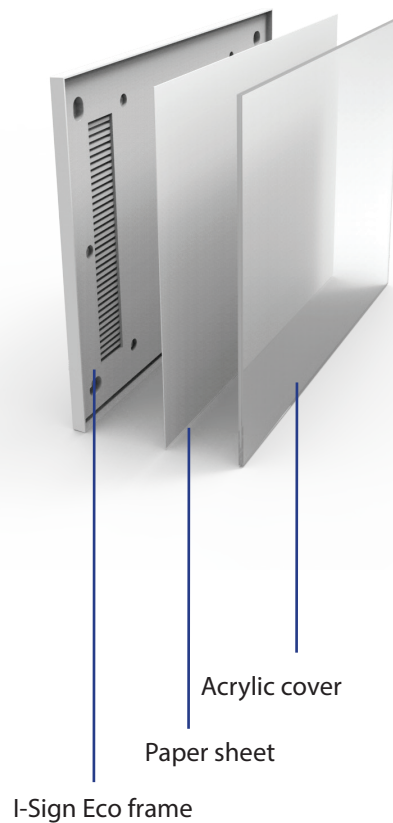
One Frame, Two Functions

The user can choose between a flexible version with a paper inlay behind a non-reflecting acrylic cover, or a more fixed version with 2 or 3mm thick sheets in different materials like PVC, ACM, acrylic or aluminium which allow for a highly customized solution.

I-SIGN ECO FIX

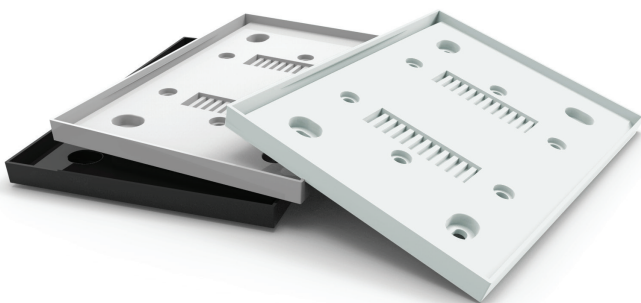


I-SIGN ECO FLEX



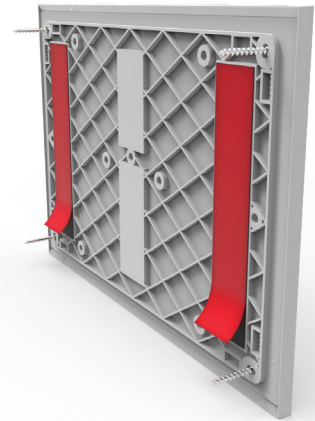
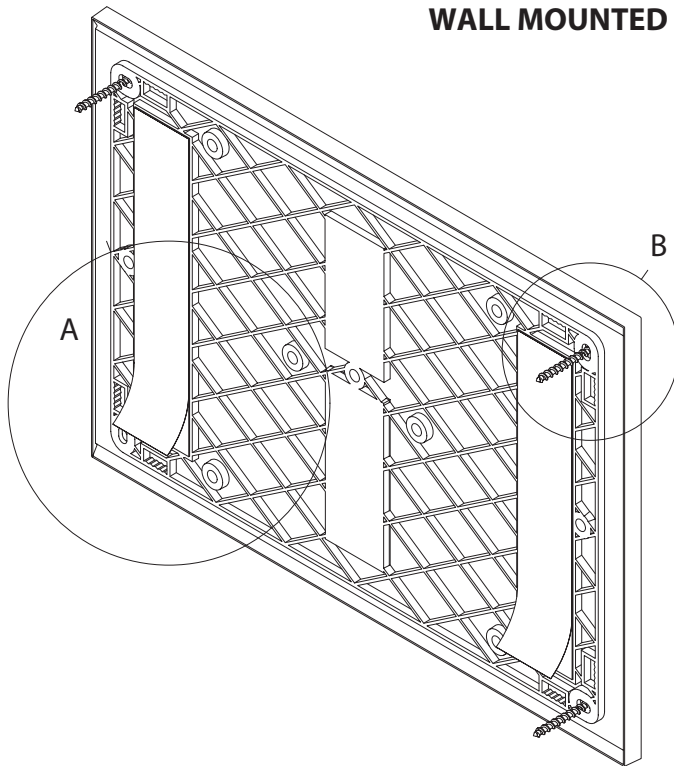
The frames, which are available in sizes DINA6, DINA5, DINA4, DINA3, 150x150mm and 150x300mm, are injection molded in abs plastic and are available in different colors.

Standard colors are aluminium grey and black.



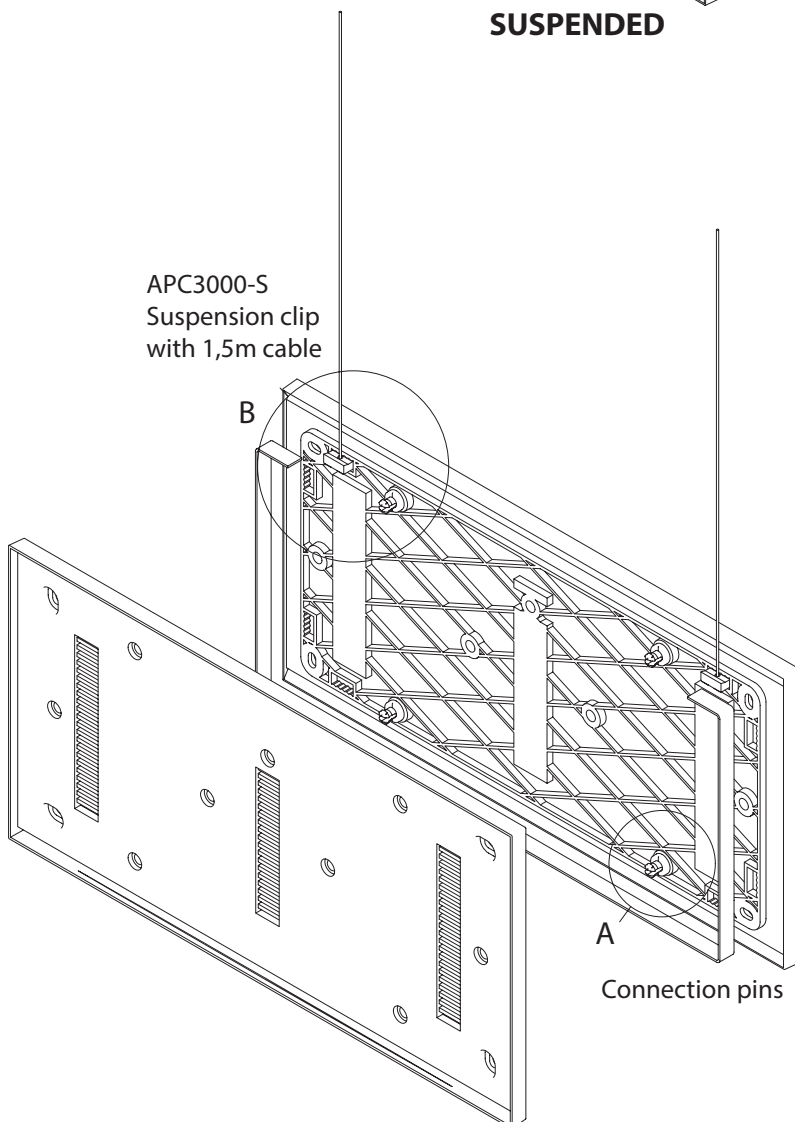
INSTALLATION I-SIGN ECO

WALL MOUNTED



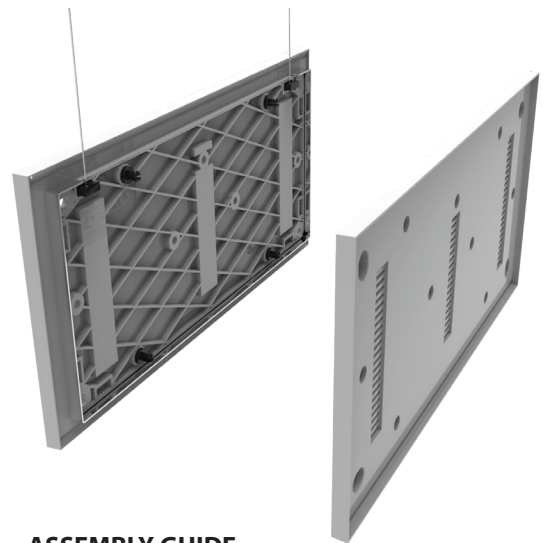
Use double sided tape (A) or screws (B) for wall mounting (depending on wall surface)

SUSPENDED



APC3000-S
Suspension clip
with 1,5m cable

Connection pins



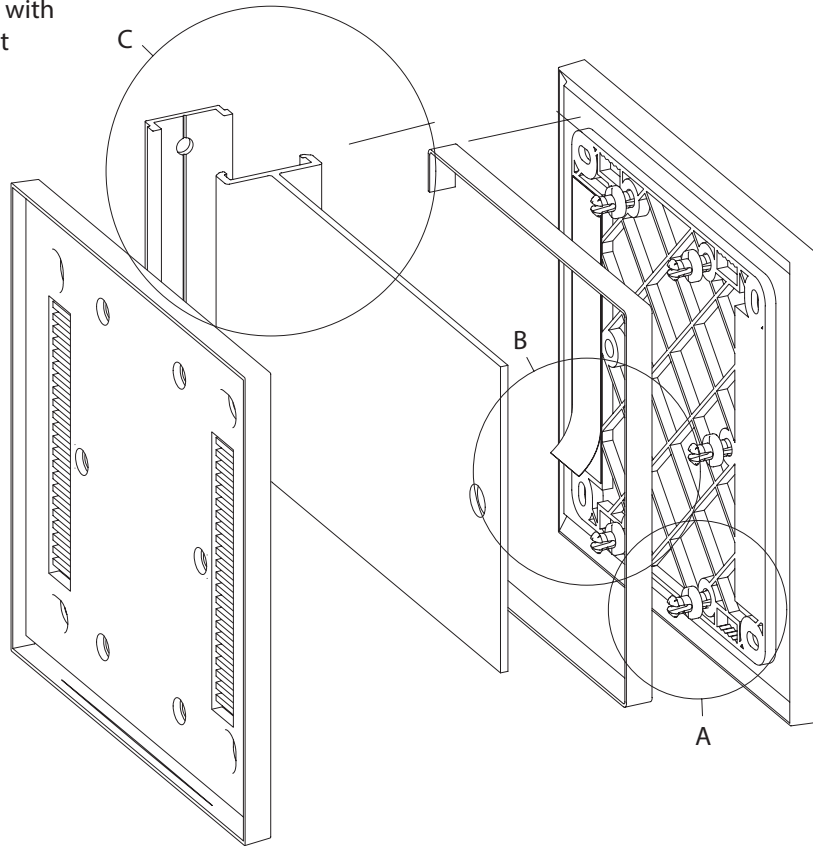
ASSEMBLY GUIDE

1. Press connection pins in the I-Sign Eco frame (A)
2. Place suspension clips APC3000-S with the wire in the provided cavity (B)
3. Place the cover to hide the interior of the assembly
4. Click the two frames together
5. Install paper/inlay (I-Sign Eco Flex) or rigid materials (I-Sign Eco Fix)

INSTALLATION I-SIGN ECO

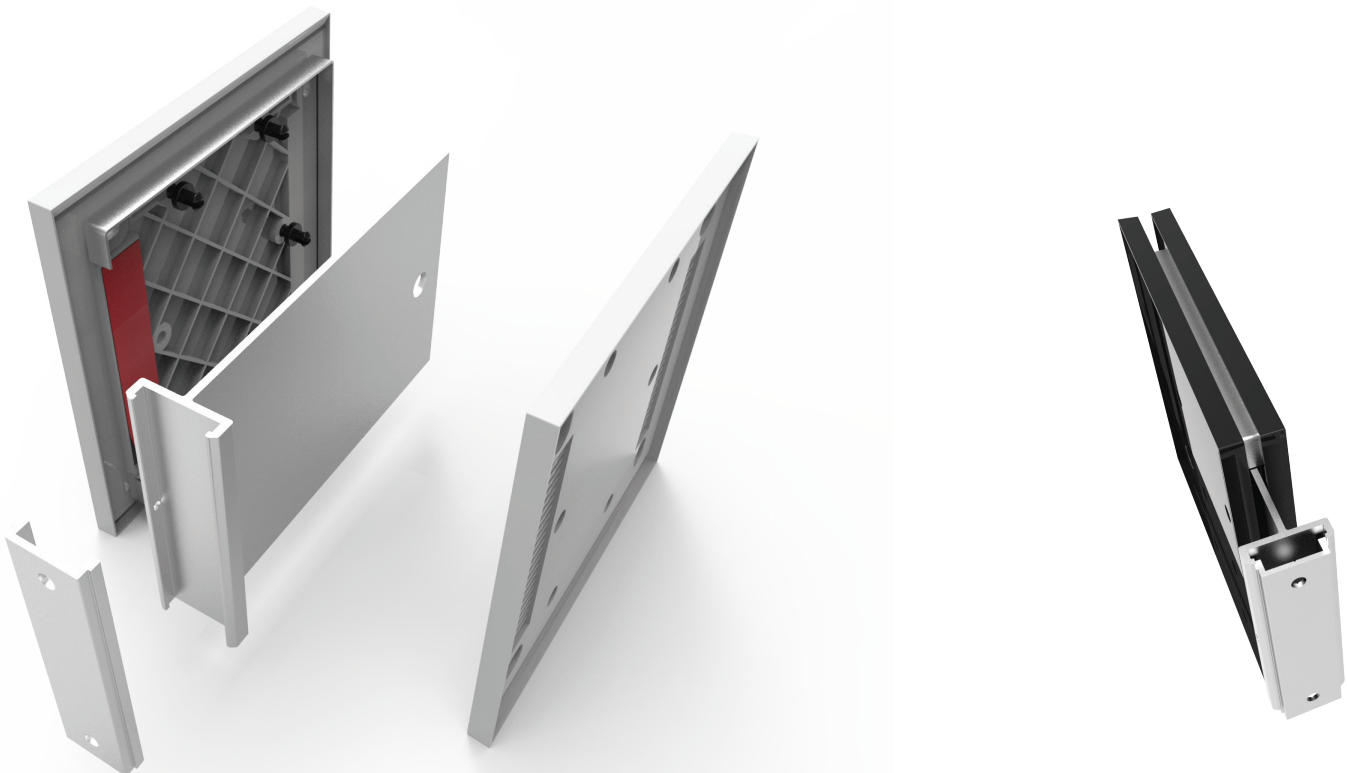
PROJECTED

Flag profile with
wall bracket



ASSEMBLY GUIDE

1. Press connection pins in the I-Sign Eco frame (A)
2. Apply tape on both I-Sign Eco frames (B)
3. Place the flag profile (C)
4. Place the cover to hide the interior of the assembly
5. Click the two frames together
6. Install paper/inlay (I-Sign Eco Flex) or rigid materials (I-Sign Eco Fix)



I-SIGN ECO FLEX

WALL MOUNTED

I-Sign Eco Flex Wall Mounted. Included: I-Sign Eco Frame, Acrylic cover.



product code	insert (h x w) in mm
IE-150150-W-X	150 x 150
IE-150300-W-X	150 x 300
IE-105148-W-X	105 x 148,5 (DIN A6)
IE-210148-W-X	210 x 148,5 (DIN A5)
IE-210297-W-X	210 x 297 (DIN A4)
IE-420297-W-X	420 x 297 (DIN A3)

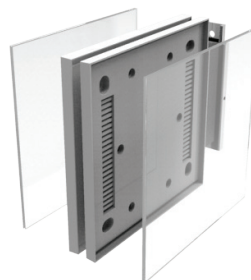
X = colour code:

B: Black, G: Grey

(Other colours available on request.)

PROJECTED

I-Sign Eco Flex Projected. Fully assembled including: 2x I-Sign Eco Frames, Connection Pins, Interior Cover, Flag system, Acrylic covers.



product code	insert (h x w) in mm
IE-150150-P-X	150 x 150
IE-150300-P-X	150 x 300
IE-210297-P-X	210 x 297 (DIN A4 landscape)
IE-297210-P-X	297 x 210 (DIN A4 portrait)

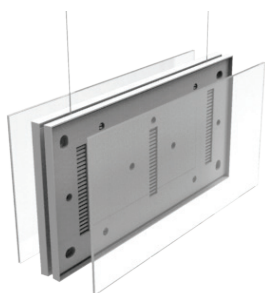
X = colour code:

B: Black, G: Grey

(Other colours available on request.)

SUSPENDED

I-Sign Eco Flex Suspended. Included: 2x I-Sign Eco Frames, Connection Pins, Interior Cover, Suspension cables, Acrylic covers.



product code	insert (h x w) in mm
IE-150150-S-X	150 x 150
IE-150300-S-X	150 x 300
IE-210297-S-X	210 x 297 (DIN A4 landscape)
IE-297210-S-X	297 x 210 (DIN A4 portrait)

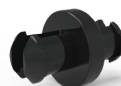
X = colour code:

B: Black, G: Grey

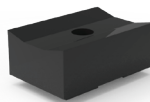
(Other colours available on request.)

See also page 52 in our architectural brochure for more suspension systems.

ACCESSORIES



product code	description
IE-CONNECTOR	Connector to combine two I-Sign Eco frames.



APC-3000-S	Suspension Clip.
------------	------------------



APC-CABLE-1.5	1.5mm thick galvanized cable (7x7). 1,5m length with 4,5mm ball nipple.
---------------	--

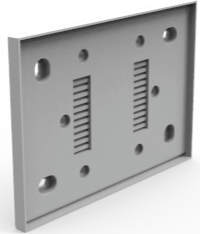


I-FLAG3-100	I-Flag 3 profile with mount 100mm
I-FLAG3-150	I-Flag 3 profile with mount 150mm

I-SIGN ECO FIX

WALL MOUNTED

I-Sign Eco Flex Wall Mounted. Included: I-Sign Eco Frame.

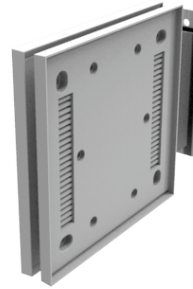


product code	insert (h x w) in mm
IFE-150150-W-X	150 x 150
IFE-150300-W-X	150 x 300
IFE-105148-W-X	105 x 148,5 (DIN A6)
IFE-210148-W-X	210 x 148,5 (DIN A5)
IFE-210297-W-X	210 x 297 (DIN A4)
IFE-420297-W-X	420 x 297 (DIN A3)

X = colour code:
B: Black, G: Grey
(Other colours available on request.)

PROJECTED

I-Sign Eco Flex Projected. Fully assembled including: 2x I-Sign Eco Frames, Connection Pins, Interior Cover, Flag system.



product code	insert (h x w) in mm
IFE-150150-P-X	150 x 150
IFE-150300-P-X	150 x 300
IFE-210297-P-X	210 x 297 (DIN A4 landscape)
IFE-297210-P-X	297 x 210 (DIN A4 portrait)

X = colour code:
B: Black, G: Grey
(Other colours available on request.)

ACCESSORIES

product code description



IE-COV150150 Cover to hide I-Sign Eco frame interior. For 150x150mm projected.



IE-COV150300 Cover to hide I-Sign Eco frame interior. For 150x300mm suspended.



IE-COV300150 Cover to hide I-Sign Eco frame interior. For 150x300mm projected



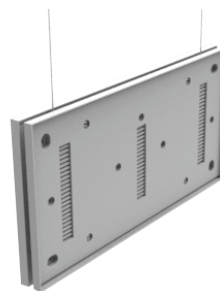
IE-COV210297 Cover to hide I-Sign Eco frame interior. For 210x297mm suspended



IE-COV297210 Cover to hide I-Sign Eco frame interior. For 210x297mm projected

SUSPENDED

I-Sign Eco Flex Suspended. Included: 2x I-Sign Eco Frames, Connection Pins, Interior Cover, Suspension cables.



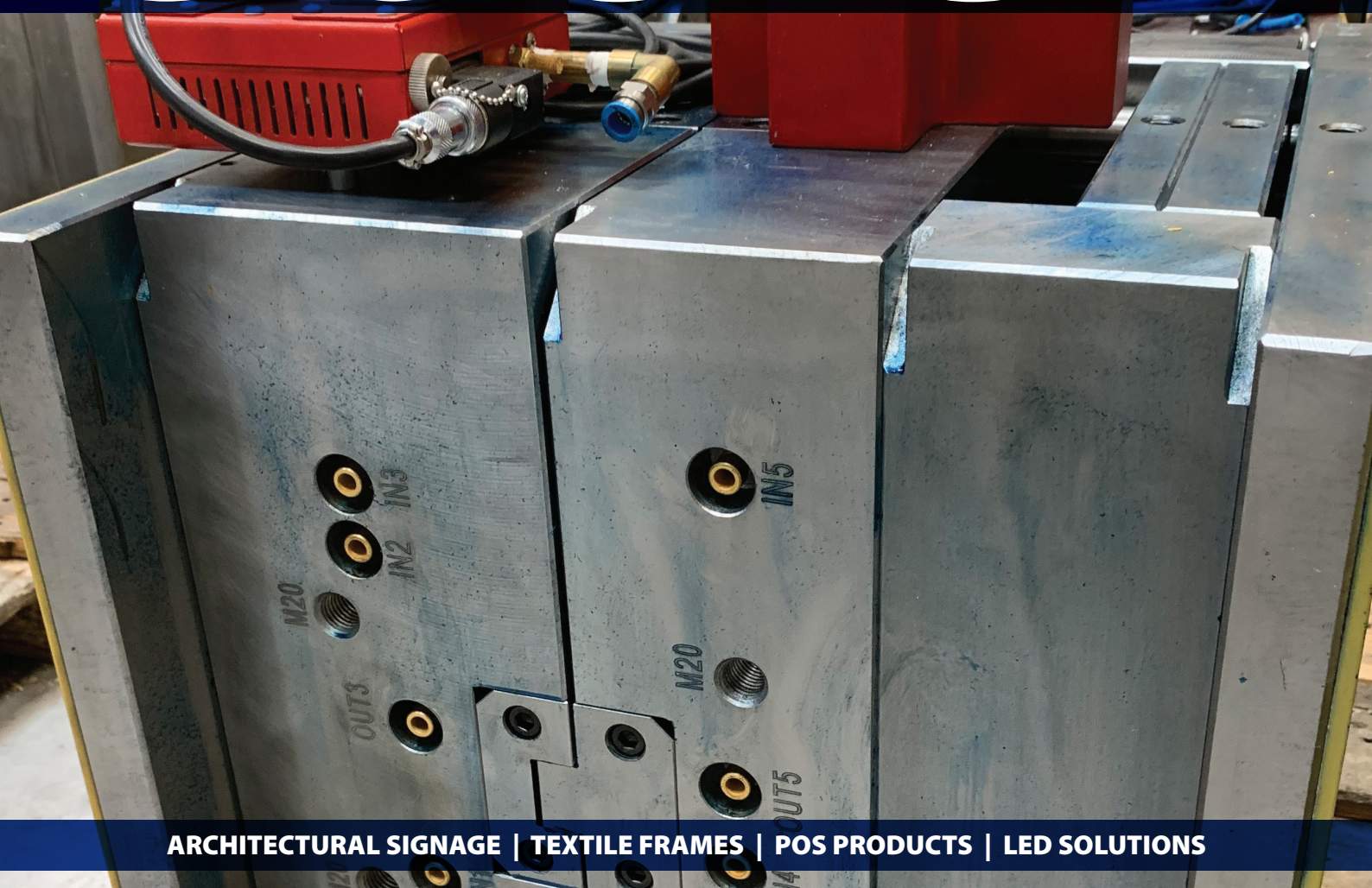
product code	insert (h x w) in mm
IFE-150150-S-X	150 x 150
IFE-150300-S-X	150 x 300
IFE-210297-S-X	210 x 297 (DIN A4 landscape)
IFE-297210-S-X	297 x 210 (DIN A4 portrait)

X = colour code:
B: Black, G: Grey
(Other colours available on request.)

See also page 52 in our architectural brochure for more suspension systems.

COSIGN

ARCHITECTURAL SIGNAGE



ARCHITECTURAL SIGNAGE | TEXTILE FRAMES | POS PRODUCTS | LED SOLUTIONS

Cosign is a designer, manufacturer and distributor of architectural signage & way finding solutions, poster frames & displays, led modules and sign making tools. Based in Belgium with regional offices in Mexico, Brazil and India, and through our global partner network, our sign solutions are available in more than 80 countries.

COSIGN

COSIGN nv
Industriepark 32 B
B-3290 Diest
Belgium
www.cosign.be



YOUR DEALER